



CISA®

Asix Cylinders



Asix Cylinders

CYLINDER SECURITY – Attack Resistance

- High drill resistance, thanks to casehardened pin and driver in first position.

KEY RELATED SECURITY

- Bitting system with 6 pins.
- Over 30,000 possible combinations (different keys).

DURABILITY

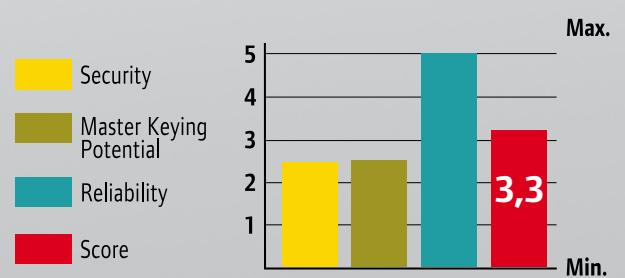
- Tested up to 100,000 cycles.

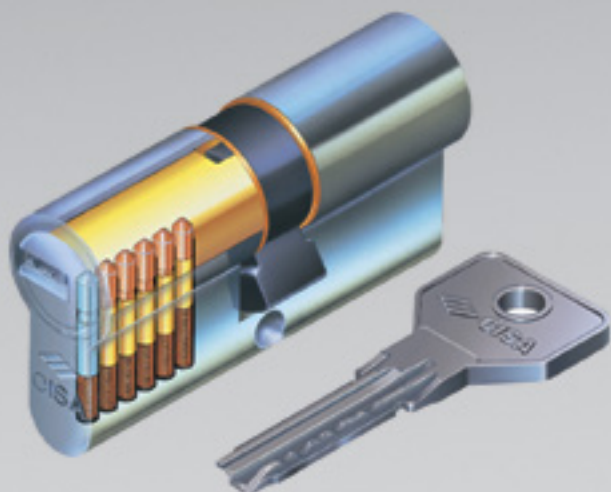
EN 1303:2005

- Compliant with the European Standard EN 1303:2005.
 - Attack Resistance: 0 0 1 2
 - Key Related Security: 5 1 2 3 4 5 6
 - Durability: 6 4 5 6

APPLICATIONS

- Asix is suitable for the management of secondary access to shops and residential buildings where basic security is required.



**Technical features:****CYLINDER:**

- 6 pin biting system.
- Brass body.
- Brass plugs.
- Self-lubricated sintered steel DIN cam.
- Pins:
 - in bronze
 - in hardened steel in first position.
- Stainless steel side securing balls.
- Drivers:
 - in brass
 - in hardened steel in first position.
- Phosphor bronze springs.

KEY:

- Flat, non-handed insertion.
- Material: nickel-plated brass.
- Thickness: 2.9 mm.
- Depth: 0.48 mm.
- Compatible with protective roses.

Finishes:

- Standard: ground brass (fin. 00).
- On request: nickel-plated brass (fin. 12).

On request:

- KA, MK, CE, C5 and their variations.

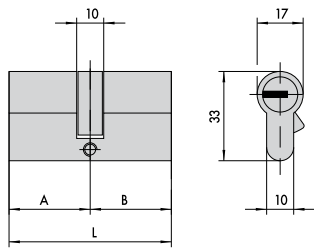
Supplied as standard:

- Fixing screw.
- 3 keys: item 1.00670.01.0.

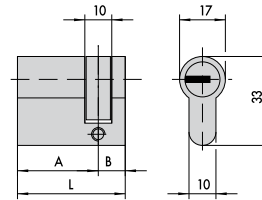
Type	Description	Comm. dim.	L	A	B	Pins	Key item	Kg	Pieces	ITEM				
										Type	Dim.	Hand	Fin.	Pers.
	<ul style="list-style-type: none"> • Single cylinder with 8 position adjustable cam • Item 1.0E304.18.0 fixed cam 	25/10	39,5	24,5	10,0	6	1 00670 01 0	0,164	6	1 0E304 18 0				
		30/10	39,5	29,5	10,0	6	1 00670 01 0	0,164	6	1 0E304 02 0				
		35/10	44,5	34,5	10,0	6	1 00670 01 0	0,179	6	1 0E304 07 0				
		37/10	46,5	36,5	10,0	6	1 00670 01 0	0,185	6	1 0E304 10 0				
		40/10	49,5	39,5	10,0	6	1 00670 01 0	0,195	6	1 0E304 03 0				
		45/10	54,5	44,5	10,0	6	1 00670 01 0	0,207	6	1 0E304 08 0				
		50/10	59,5	49,5	10,0	6	1 00670 01 0	0,222	6	1 0E304 04 0				
		60/10	69,5	59,5	10,0	6	1 00670 01 0	0,252	6	1 0E304 05 0				
		65/10	74,5	64,5	10,0	6	1 00670 01 0	0,267	6	1 0E304 21 0				
		70/10	79,5	69,5	10,0	6	1 00670 01 0	0,282	6	1 0E304 06 0				
		80/10	89,5	79,5	10,0	6	1 00670 01 0	0,312	6	1 0E304 20 0				
			<ul style="list-style-type: none"> • Double cylinder pre-set for thumb turn installation • ON REQUEST: Thumb turn knobs - item 1.06353.00 - item 1.06354.00 	30/30	59,0	29,5	29,5	6	1 00670 01 0	0,239	6	1 0E302 07 0		
30/35	64,0			29,5	34,5	6	1 00670 01 0	0,254	6	1 0E302 26 0				
35/30	64,0			34,5	29,5	6	1 00670 01 0	0,254	6	1 0E302 81 0				
30/40	69,0			29,5	39,5	6	1 00670 01 0	0,274	6	1 0E302 82 0				
35/35	69,0			34,5	34,5	6	1 00670 01 0	0,274	6	1 0E302 13 0				
40/30	69,0			39,5	29,5	6	1 00670 01 0	0,274	6	1 0E302 12 0				
35/40	74,0			34,5	39,5	6	1 00670 01 0	0,289	6	1 0E302 28 0				
30/50	79,0			29,5	49,5	6	1 00670 01 0	0,304	6	1 0E302 17 0				
35/45	79,0			34,5	44,5	6	1 00670 01 0	0,304	6	1 0E302 19 0				
40/40	79,0			39,5	39,5	6	1 00670 01 0	0,304	6	1 0E302 18 0				
40/45	84,0			39,5	44,5	6	1 00670 01 0	0,319	6	1 0E302 30 0				
45/40	84,0			44,5	39,5	6	1 00670 01 0	0,319	6	1 0E302 84 0				
43/43	85,0			42,5	42,5	6	1 00670 01 0	0,321	6	1 0E302 46 0				
30/60	89,0			29,5	59,5	6	1 00670 01 0	0,334	6	1 0E302 20 0				
40/50	89,0			39,5	49,5	6	1 00670 01 0	0,334	6	1 0E302 21 0				
40/55	94,0			39,5	54,5	6	1 00670 01 0	0,355	6	1 0E302 42 0				
45/50	94,0			44,5	49,5	6	1 00670 01 0	0,355	6	1 0E302 39 0				
45/55	99,0			44,5	54,5	6	1 00670 01 0	0,365	6	1 0E302 43 0				
50/50	99,0			49,5	49,5	6	1 00670 01 0	0,365	6	1 0E302 23 0				
45/60	104,0			44,5	59,5	6	1 00670 01 0	0,379	6	1 0E302 54 0				
55/50	104,0	54,5	49,5	6	1 00670 01 0	0,379	6	1 0E302 64 0						
60/60	119,0	59,5	59,5	6	1 00670 01 0	0,425	6	1 0E302 40 0						
	<ul style="list-style-type: none"> • Nickel-plated double cylinder with special cam turned by 90° specific for locks series 46305 • 3 keys • Fixing screw 	30/30	59,0	29,5	29,5	6		0,225	6	1 0E303 07 0 12				
	<ul style="list-style-type: none"> • Nickel-plated double cylinder with special cam turned by 90° specific for locks series 46305 • 3 keys • Fixing screw 	30/10	39,5	29,5	10,0	6		0,164	6	1 0E305 02 0 12				

Type	Description	For locks series	L	Pins	Key item	Unit weight Pieces	ITEM							
							Type	Dim.	Hand	Fin.	Pers.	Spec.		
	<ul style="list-style-type: none"> • Cylinder 	1A610	6	1	1 00670 01 0	0,182	6	1	0E500 00 0					
	<ul style="list-style-type: none"> • Tubular cylinder • For extra lengths see item 07165 	1A611	50,0	6	1 00670 01 0	0,170	6	1	0E200 50 0					
	<ul style="list-style-type: none"> • Pair of cylinders 	1A630	6	1	1 00670 01 0	0,250	6	1	0E115 00 0					
	<ul style="list-style-type: none"> • Pair of cylinders with external tubular cylinder 	1A631, 1A721, 1A731	55,0	6	1 00670 01 0	0,255	6	1	0E150 00 0					
	<ul style="list-style-type: none"> • Cylinder for external drive item 1.07077.28.0 • Ground brass 		6	1	1 00670 01 0	0,117	6	1	0E600 10 0					
	<ul style="list-style-type: none"> • Cylinder for external drive item 1.07077.29.0 • Ground brass 		6	1	1 00670 01 0	0,117	6	1	0E600 11 0					

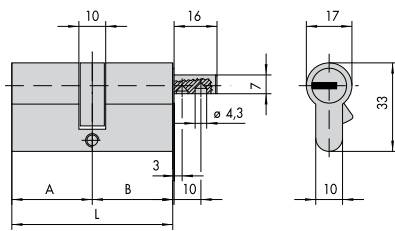
Drawings and Dimensions



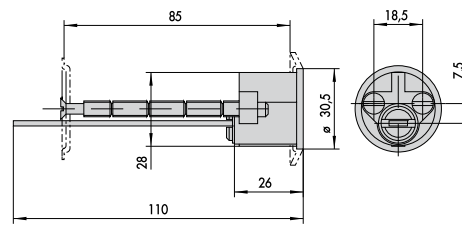
OE300, OE301, OE303



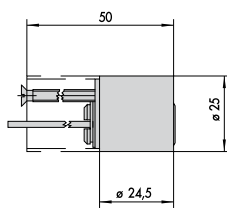
OE304, OE305



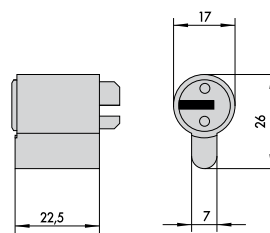
OE302



OE500



OE200



OE600

About Allegion

Allegion (NYSE: ALLE) creates peace of mind by pioneering safety and security. As a \$2 billion provider of security solutions for homes and businesses, Allegion employs more than 7,800 people and sells products in more than 120 countries across the world. Allegion comprises 23 global brands, including strategic brands CISA®, Interflex®, LCN®, Schlage® and Von Duprin®.

For more, visit allegion.com

